

# Nau mai, haere mai.

The session will be starting shortly.

*Cameras and microphones have been switched off  
due to the number of people in attendance.*



**Manatū  
Taonga**

Ministry  
for Culture  
& Heritage

# **Te Tahua Whakamarohi i te Rāngai Ahurea Cultural Sector Regeneration Fund**

***Toi tipu, toi aweawe!***

*Grow the world of arts, so we may be inspired by the world of arts!*

# Understanding our Whakataukī

**Toi tipu, toi aweawe!**

**Whakatipuria te ao toi, kia whakaaweawe i a tatou, i te ao toi!**

*Grow the world of arts, so we may be inspired by the world of arts!*

These words were chosen to encourage those within the arts, culture and heritage communities to continue to plant the seeds of creativity in their chosen fields. By doing this, our communities can nurture our shared creativity in Aotearoa New Zealand, as well as acknowledge and understand the gifts passed down by our ancestors to inspire our cultural regeneration.

# Background

- Nearly half a billion dollars of Covid Recovery funding
- Funding flowed into the sector through multiple agencies
- We have invested significantly in ***survival*** – but much less in ‘adapting’ and ‘thriving’
- 360 days left to allocate remaining recovery funding – will be focus on ‘thriving’

# We've listened and learned...

- Keep it simple
- Keep it human
- Focus on the outcomes
- Involve us
- Support our collaboration

# Fund design

- Consolidated \$28m into one fund
- Focus on outcomes
- Clear information for applicants
- Relationship managers (real people!)
- Opportunities for feedback
- Staggered funding decisions (October 2022 – April 2023)

# Purpose

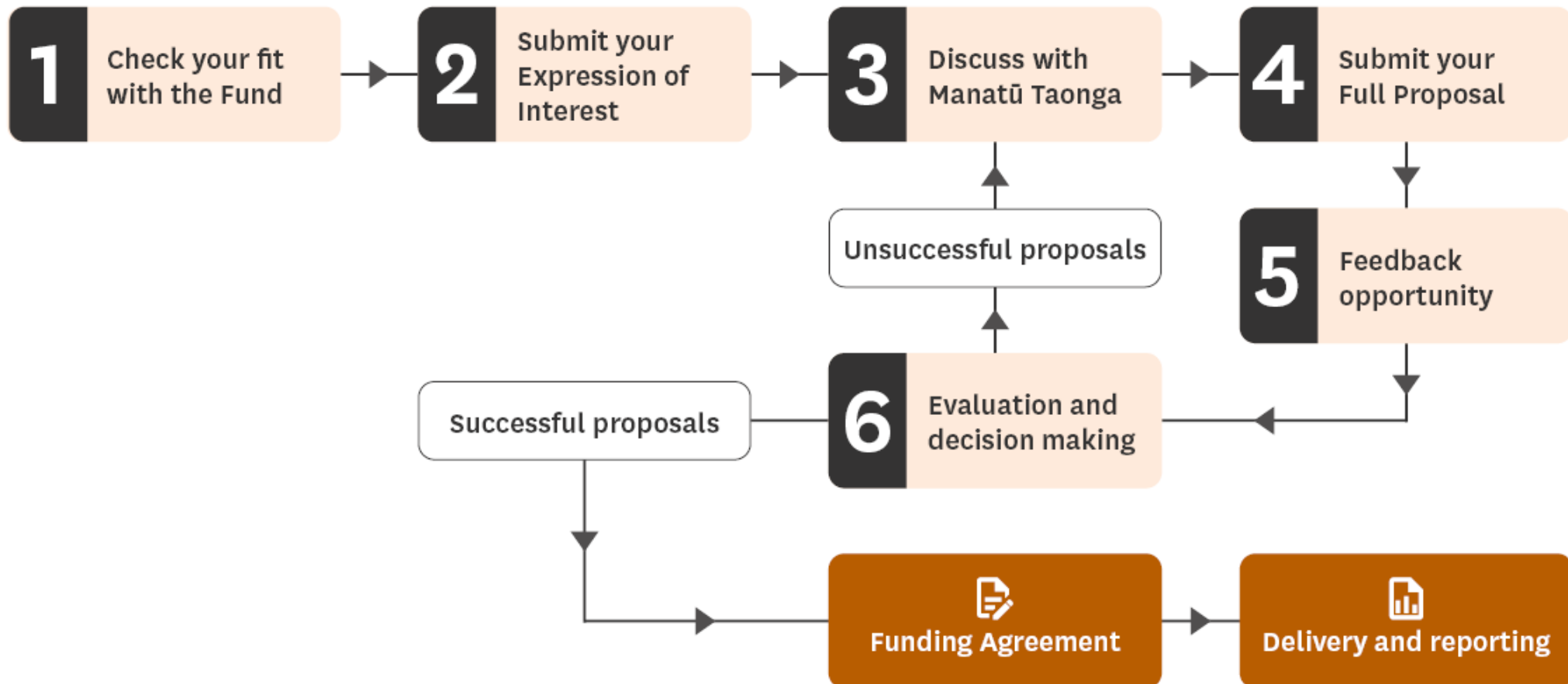
The Fund is designed to support the arts, culture and heritage sectors to recover from the impacts of COVID-19, and help the sector thrive. We want to find and fund initiatives that enable the arts, culture and heritage sectors to be more successful in the future.

# Outcomes

- Improved sustainability and resilience of the arts, culture and heritage sectors
- Improved safeguarding of Mātauranga Māori and support of Toi Māori
- Improved access and participation in arts, culture and heritage
- Increased use of arts, culture and heritage as a tool to improve wellbeing
- Increased employment and skill development opportunities

# How this Fund will work

Fund opens 27 July 2022





# How we decide who gets funding

## We will make decisions based on:

- how strongly the proposed initiative will contribute to the fund outcomes
- if the level of funding requested is proportionate to the proposal's contribution to the Fund outcomes
- the strength of the plan for delivery
- level of support from the sector – particularly those that are intended to benefit
- the lead organisation's history of successfully delivering similar initiatives.

# Example outcome assessment

## *Improved sustainability and resilience of the arts, culture and heritage sectors*

Applicants will select responses to questions, such as:

- **What reach does your initiative have?**

*For example, will the initiative benefit a specific sector, place, or organisation?*

- **To what extent will your initiative increase capability?**

*For example, how much will your initiative improve how things are done in the future?*

- **What level of support does your initiative have?**

*For example, would the people who you think will benefit from your initiative recognise it is a priority for them (and support it)?*

# Example outcome assessment

## ***Improved safeguarding of Mātauranga Māori and support of Toi Māori***

Applicants will select responses to questions, such as:

- **Ko Wai? Who is leading the initiative?**

*... are Kaitiaki and Ringatoi Māori leading the initiative, taking a significant governance role, or are they active partners in delivering the initiative?*

- **Me pēhea? How will your initiative support the transmission of vulnerable Mātauranga and the development of Toi Māori?**

*... is Mātauranga being transmitted by recognised pūkenga / kaitiaki, or are many Ringatoi being supported in their development by your initiative?*

- **Ki hea? To what degree does your initiative strengthen and sustain Taonga Tuku Iho and Toi Māori infrastructure?**

*... will the initiative significantly support the future success of Toi Māori in a given art form, place or group of people? Will the initiative preserve Taonga Tuku Iho including the people, artforms and places that sustain it?*

# Key dates

- **Fund opens**
  - 27 July to 7 September
- **Two windows to submit Full Proposal**
  - **Window 1:** 8 August – 18 October
  - **Window 2:** 1-24 February
- **Four funding decision rounds**
  - October 2022 – April 2023

# More info

- [mch.govt.nz/covid-recovery/regeneration-fund](https://mch.govt.nz/covid-recovery/regeneration-fund)
- *If you have any further questions, please email [support.culture@mch.govt.nz](mailto:support.culture@mch.govt.nz)*



**Manatū  
Taonga**

Ministry  
for Culture  
& Heritage

# **Te Tahua Whakamarohi i te Rāngai Ahurea Cultural Sector Regeneration Fund**

***Toi tipu, toi aweawe!***

*Grow the world of arts, so we may be inspired by the world of arts!*